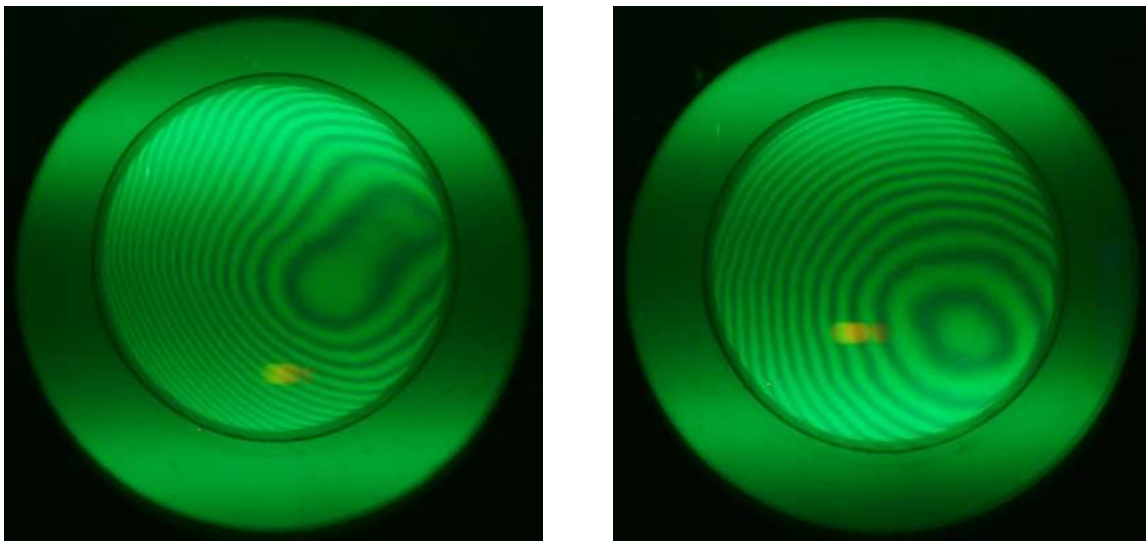
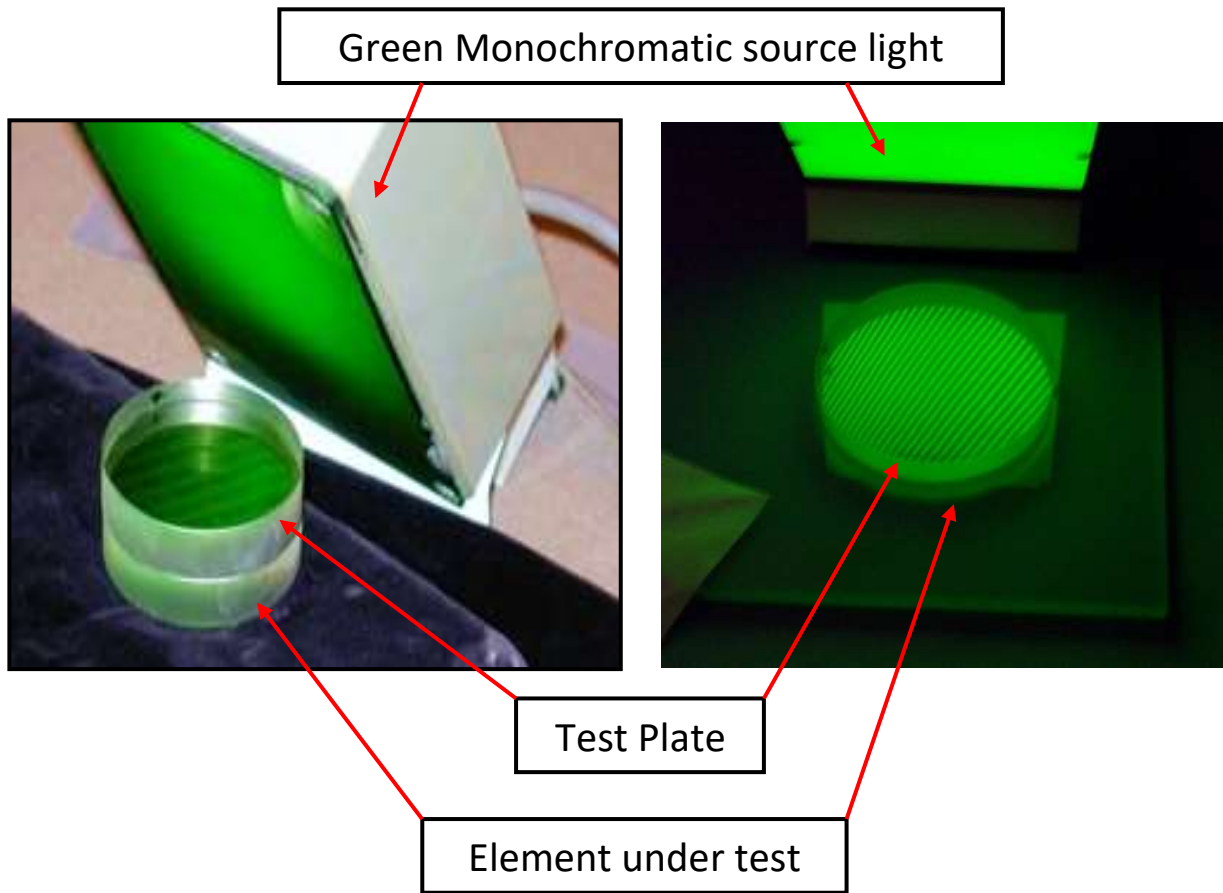
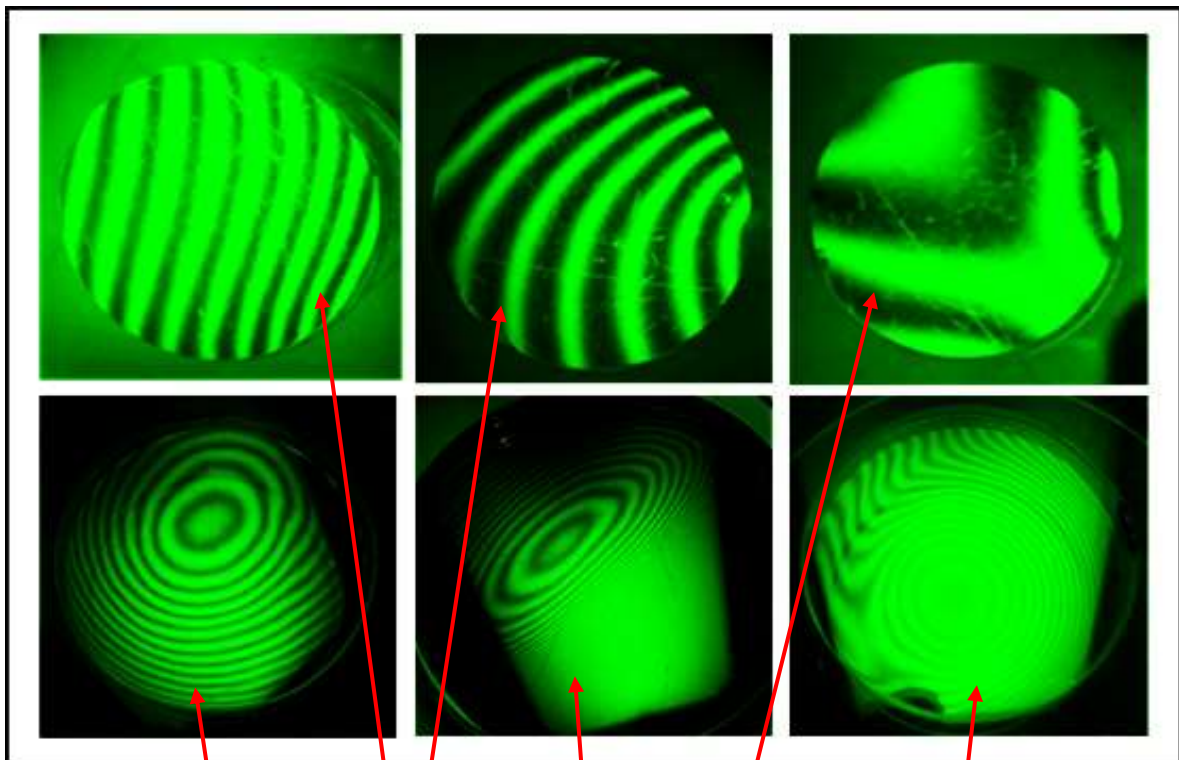
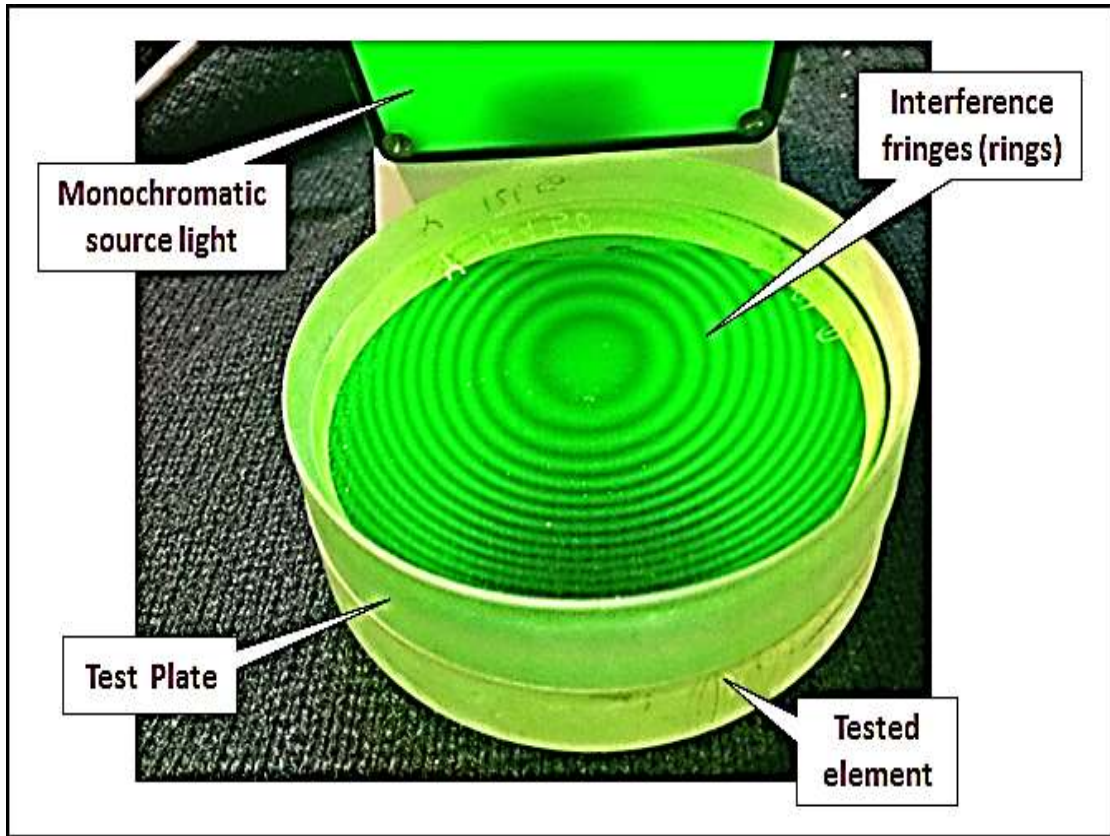


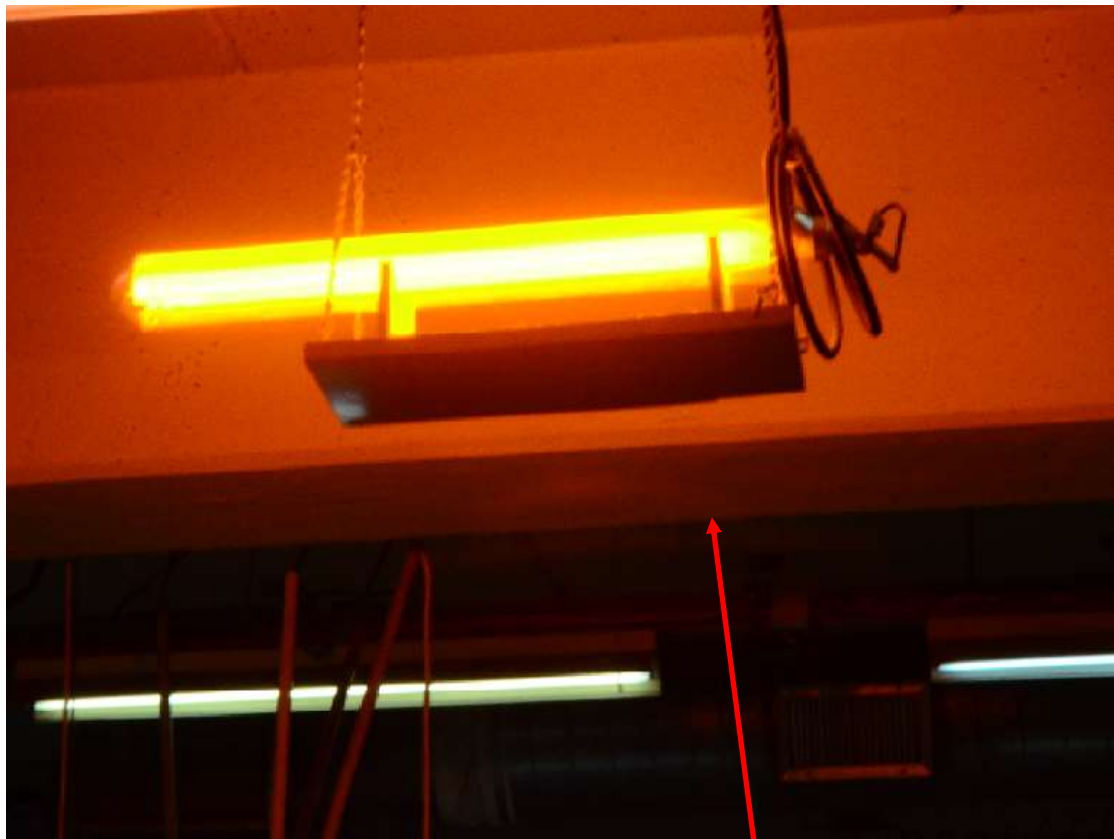
Interference patterns of optical surfaces, flat and spherical made by
Test Plate and Monochromatic Source Light



Two interference pattern of the same flat surface with green monochromatic light.

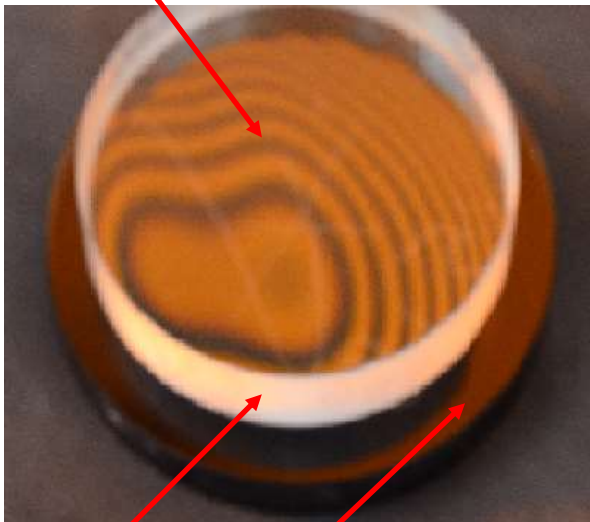
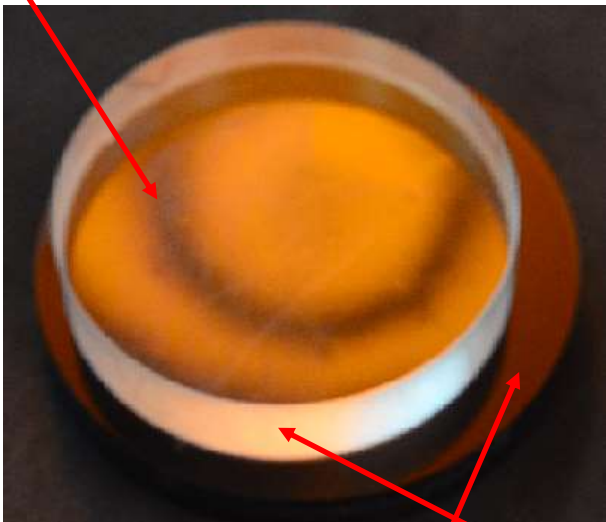


Different kind of interference patterns with Test Plates and green monochromatic light.



Yellow Monochromatic light in a workshop (up) used for measuring optical flat or spherical surfaces with a Test Plate (down)

Interference fringes (Newton Rings)



Test Plate

Flat surface under test